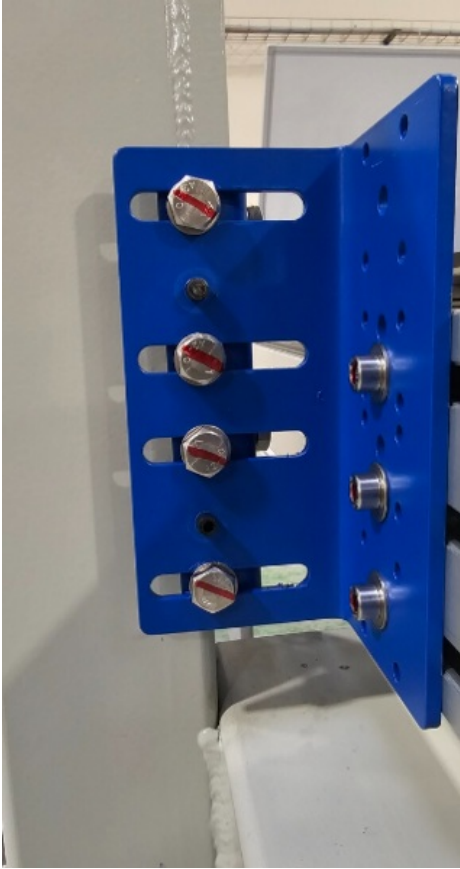


Fichier:R0015029D Hepco Beam Alignment Part 2 Screenshot 2023-11-09 103028.png




Size of this preview: 319 × 599 pixels.

Original file (321 × 603 pixels, file size: 260 KB, MIME type: image/png)

R0015029D_Hepco_Beam_Alignment_Part_2_Screenshot_2023-11-09_103028

File history

Click on a date/time to view the file as it appeared at that time.

	Date/Time	Thumbnail	Dimensions	User	Comment
current	12:30, 9 November 2023		321 × 603 (260 KB)	Gareth Green (talk contribs)	R0015029D_Hepco_Beam_Alignment_Part_2_Screenshot_2023-11-09_103028

You cannot overwrite this file.

File usage

The following page links to this file:

R0015029D Hepco Beam Alignment Part 2

Metadata

This file contains additional information, probably added from the digital camera or scanner used to create or digitize it. If the file has been modified from its original state, some details may not fully reflect the modified file.

Horizontal resolution	37.79 dpc
Vertical resolution	37.79 dpc