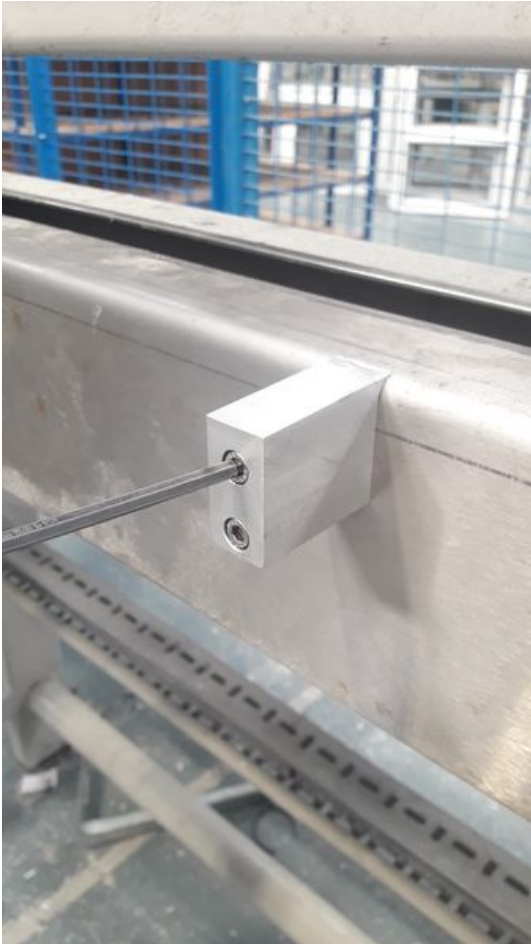


Fichier:Flowline 6 to 6o5m Extension 17.jpg




Size of this preview: 337 × 599 pixels.

Original file (2,322 × 4,128 pixels, file size: 2.71 MB, MIME type: image/jpeg)

Flowline_6_to_6o5m_Extension_17

File history

Click on a date/time to view the file as it appeared at that time.

	Date/Time	Thumbnail	Dimensions	User	Comment
current	17:44, 26 January 2022		2,322 × 4,128 (2.71 MB)	Gareth Green (talk contribs)	Flowline_6_to_6o5m_Extension_17

You cannot overwrite this file.

File usage

The following page links to this file:

Flowline 6 to 6o5m Extension

Metadata

This file contains additional information, probably added from the digital camera or scanner used to create or digitize it. If the file has been modified from its original state, some details may not fully reflect the modified file.

Camera manufacturer	samsung
Camera model	SM-G390F

Exposure time	1/33 sec (0.0303030303030303)
F Number	f/1.9
ISO speed rating	100
Date and time of data generation	17:44, 18 July 2019
Lens focal length	3.7 mm
Orientation	Rotated 90° CCW
Horizontal resolution	72 dpi
Vertical resolution	72 dpi
Software used	G390FXXU4BSB3
File change date and time	17:44, 18 July 2019
Y and C positioning	Centered
Exposure Program	Normal program
Exif version	2.2
Date and time of digitizing	17:44, 18 July 2019
Meaning of each component	<ol style="list-style-type: none"> 1. Y 2. Cb 3. Cr 4. does not exist
APEX shutter speed	5.06
APEX aperture	1.85
APEX brightness	2.34
APEX exposure bias	0.6
Maximum land aperture	1.85 APEX (f/1.9)
Metering mode	Spot
Flash	Flash did not fire
DateTime subseconds	0,046
DateTimeOriginal subseconds	0,046
DateTimeDigitized subseconds	0,046
Supported Flashpix version	0,100
Color space	sRGB
Exposure mode	Auto exposure
White balance	Auto white balance
Focal length in 35 mm film	28 mm
Scene capture type	Standard
Unique image ID	V13LLIA02AM V13LLKF01SA