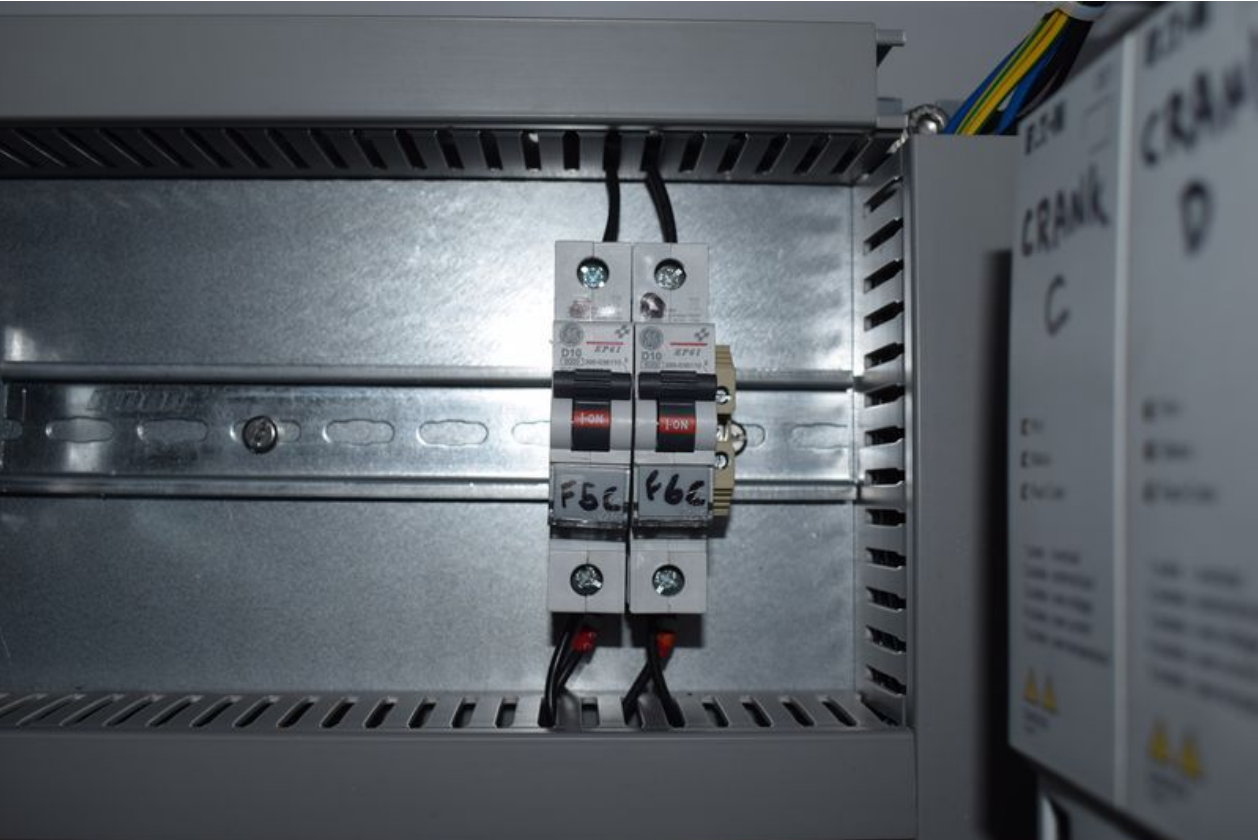


Fichier:Fitting Zx5 Crank Upgrade DSC 0317.JPG



Size of this preview:800 × 533 pixels.
Original file (6,000 × 4,000 pixels, file size: 8.48 MB, MIME type: image/jpeg)
Fitting_Zx5_Crank_Upgrade_DSC_0317

File history

Click on a date/time to view the file as it appeared at that time.

	Date/Time	Thumbnail	Dimensions	User	Comment
current	13:10, 17 October 2019		6,000 × 4,000 (8.48 MB)	Stuga Engineer (talk contribs)	Fitting_Zx5_Crank_Upgrade_DSC_0317

You cannot overwrite this file.

File usage

The following page links to this file:

Fitting Zx5 Crank Upgrade

Metadata

This file contains additional information, probably added from the digital camera or scanner used to create or digitize it. If the file has been modified from its original state, some details may not fully reflect the modified file.

Camera manufacturer	NIKON CORPORATION
Camera model	NIKON D5300
Exposure time	1/60 sec (0.016666666666667)
F Number	f/8
ISO speed rating	100
Date and time of data generation	11:53, 17 October 2019
Lens focal length	26 mm

Orientation	Normal
Horizontal resolution	300 dpi
Vertical resolution	300 dpi
Software used	Ver.1.03
File change date and time	11:53, 17 October 2019
Y and C positioning	Centered
Exposure Program	Not defined
Exif version	2.3
Date and time of digitizing	11:53, 17 October 2019
Meaning of each component	1. Y 2. Cb 3. Cr 4. does not exist
Image compression mode	4
APEX exposure bias	0
Maximum land aperture	4 APEX (f/4)
Metering mode	Pattern
Light source	Unknown
Flash	Flash fired, strobe return light detected, auto mode
DateTime subseconds	10
DateTimeOriginal subseconds	10
DateTimeDigitized subseconds	10
Supported Flashpix version	0,100
Color space	sRGB
Sensing method	One-chip color area sensor
File source	Digital still camera
Scene type	A directly photographed image
Custom image processing	Normal process
Exposure mode	Auto exposure
White balance	Auto white balance
Digital zoom ratio	1
Focal length in 35 mm film	39 mm
Scene capture type	Standard
Scene control	None
Contrast	Normal
Saturation	Normal
Sharpness	Normal
Subject distance range	Unknown
GPS tag version	0.0.3.2
Rating (out of 5)	0