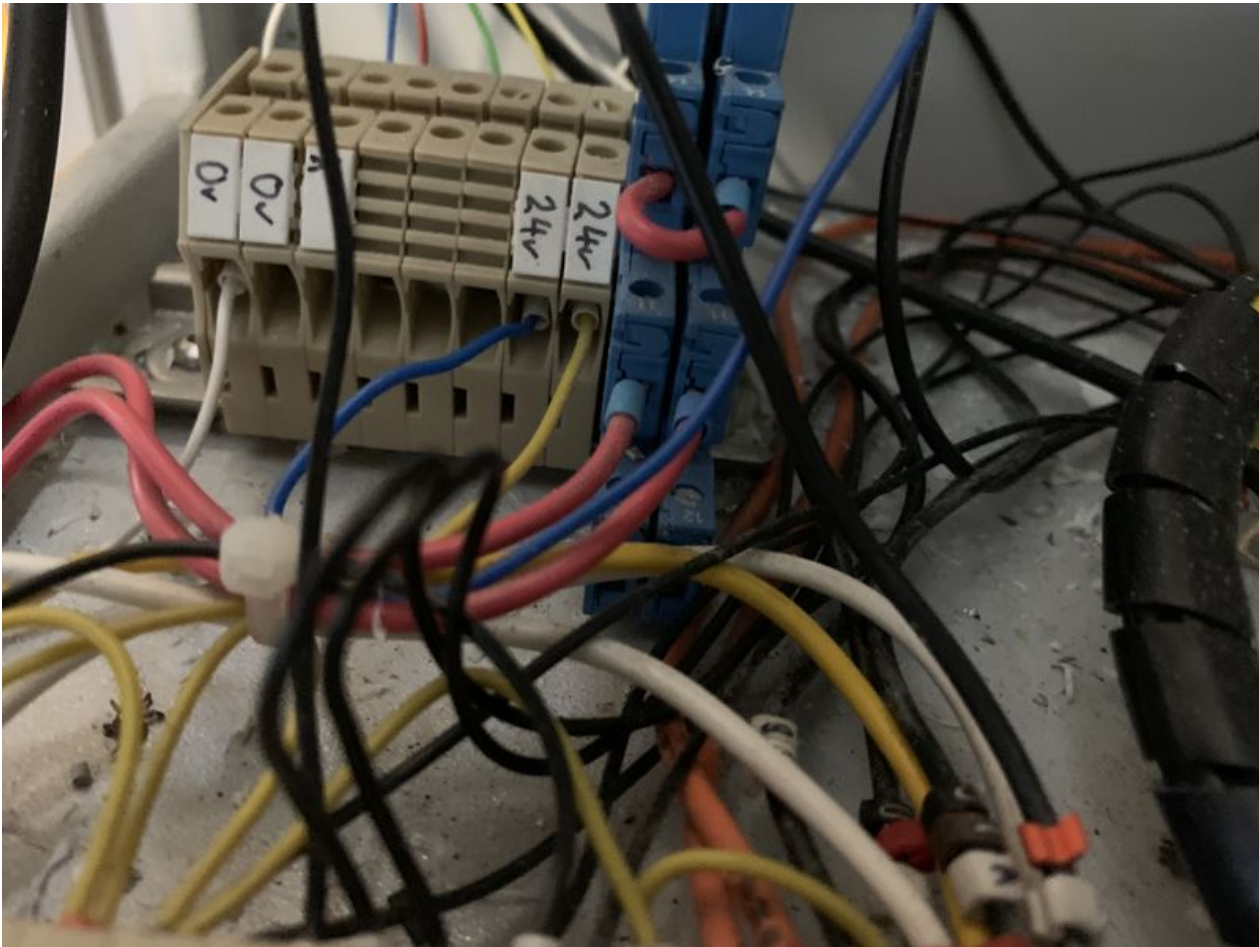


# Fichier:Correcting Linearity with Rack Offset File 2020-03-05 14.25.12.jpg




Size of this preview:800 × 600 pixels.

Original file (4,032 × 3,024 pixels, file size: 5.9 MB, MIME type: image/jpeg)

Correcting\_Linearity\_with\_Rack\_Offset\_File\_2020-03-05\_14.25.12

## File history

Click on a date/time to view the file as it appeared at that time.

	Date/Time	Thumbnail	Dimensions	User	Comment
current	18:18, 5 March 2020		4,032 × 3,024 (5.9 MB)	Gareth Green (talk   contribs)	Correcting_Linearity_with_Rack_Offset_File_2020-03-05_14.25.12

You cannot overwrite this file.

## File usage

There are no pages that link to this file.

## Metadata

This file contains additional information, probably added from the digital camera or scanner used to create or digitize it. If the file has been modified from its original state, some details may not fully reflect the modified file.

Camera manufacturer	Apple
Camera model	iPhone XR
Exposure time	1/17 sec (0.058823529411765)
F Number	f/1.8

ISO speed rating	800
Date and time of data generation	14:25, 5 March 2020
Lens focal length	4.25 mm
Latitude	53° 21' 56.42" N
Longitude	3° 4' 2.26" W
Altitude	22.987 meters above sea level
Orientation	Rotated 180°
Horizontal resolution	72 dpi
Vertical resolution	72 dpi
Software used	13.3.1
File change date and time	14:25, 5 March 2020
Y and C positioning	Centered
Exposure Program	Normal program
Exif version	2.31
Date and time of digitizing	14:25, 5 March 2020
Meaning of each component	<ol style="list-style-type: none"> <li>1. Y</li> <li>2. Cb</li> <li>3. Cr</li> <li>4. does not exist</li> </ol>
APEX shutter speed	4.0589177343223
APEX aperture	1.6959938128384
APEX brightness	-2.8254889061659
APEX exposure bias	0
Metering mode	Pattern
Flash	Flash did not fire, auto mode
DateTimeOriginal subseconds	452
DateTimeDigitized subseconds	452
Supported Flashpix version	0,100
Color space	Uncalibrated
Sensing method	One-chip color area sensor
Scene type	A directly photographed image
Exposure mode	Auto exposure
White balance	Auto white balance
Focal length in 35 mm film	26 mm
Scene capture type	Standard
Speed unit	Kilometers per hour
Speed of GPS receiver	0
Reference for direction of image	True direction
Direction of image	233.53552238806
Reference for bearing of destination	True direction
Bearing of destination	233.53552238806