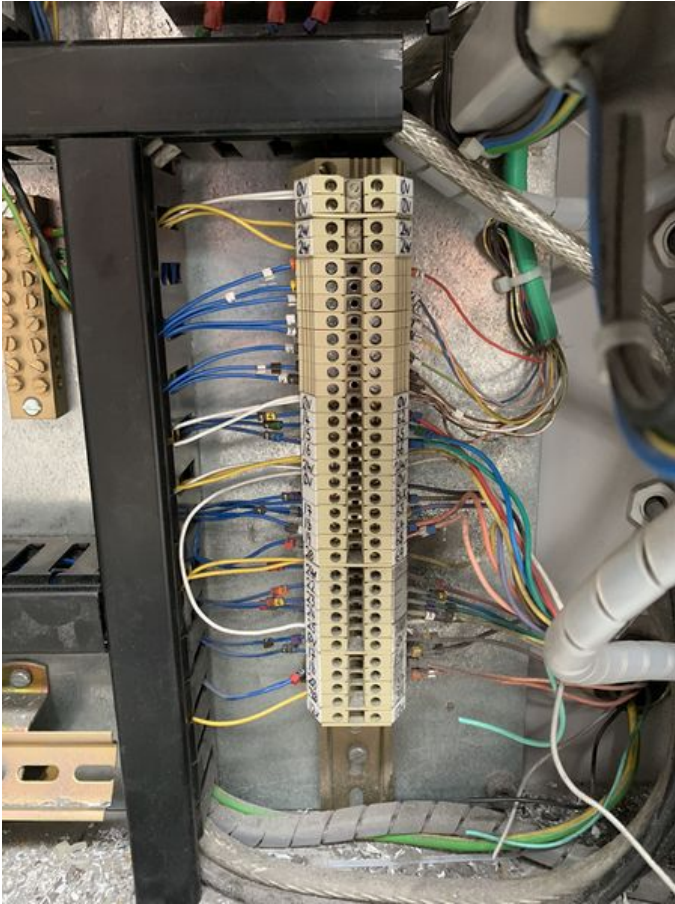


Fichier:Beckhoff AX8000 Flowline Upgrade Transfer Vertical Terminals.JPGG




Size of this preview:450 × 600 pixels.

Original file (1,536 × 2,048 pixels, file size: 1.11 MB, MIME type: image/jpeg)

Beckhoff_AX8000_Flowline_Upgrade_Transfer_Vertical_Terminals

File history

Click on a date/time to view the file as it appeared at that time.

	Date/Time	Thumbnail	Dimensions	User	Comment
current	12:48, 26 March 2020		1,536 × 2,048 (1.11 MB)	Anonymous (talk)	Beckhoff_AX8000_Flowline_Upgrade_Transfer_Vertical_Terminals

You cannot overwrite this file.

File usage

The following page links to this file:

Beckhoff AX8000 Flowline Upgrade

Metadata

This file contains additional information, probably added from the digital camera or scanner used to create or digitize it. If the file has been modified from its original state, some details may not fully reflect the modified file.

Camera manufacturer	Apple
Camera model	iPhone XS
Exposure time	1/40 sec (0.025)
F Number	f/1.8

ISO speed rating	400
Date and time of data generation	11:16, 13 September 2019
Lens focal length	4.25 mm
Latitude	54° 36' 1.74" N
Longitude	5° 40' 43.32" W
Altitude	54.024 meters above sea level
Horizontal resolution	72 dpi
Vertical resolution	72 dpi
Software used	12.4
File change date and time	11:16, 13 September 2019
Y and C positioning	Centered
Exposure Program	Normal program
Exif version	2.21
Date and time of digitizing	11:16, 13 September 2019
Meaning of each component	<ol style="list-style-type: none"> 1. Y 2. Cb 3. Cr 4. does not exist
APEX shutter speed	5.3277683854607
APEX aperture	1.6959938128384
APEX brightness	0.4220958552603
APEX exposure bias	0
Metering mode	Pattern
Flash	Flash did not fire, auto mode
DateTimeOriginal subseconds	558
DateTimeDigitized subseconds	558
Supported Flashpix version	0,100
Color space	Uncalibrated
Sensing method	One-chip color area sensor
Scene type	A directly photographed image
Exposure mode	Auto exposure
White balance	Auto white balance
Focal length in 35 mm film	26 mm
Scene capture type	Standard
GPS time (atomic clock)	10:16
Speed unit	Kilometers per hour
Speed of GPS receiver	0.16183444846061
Reference for direction of image	True direction
Direction of image	70.36988068365
Reference for bearing of destination	True direction
Bearing of destination	70.36988068365
GPS date	13 September 2019