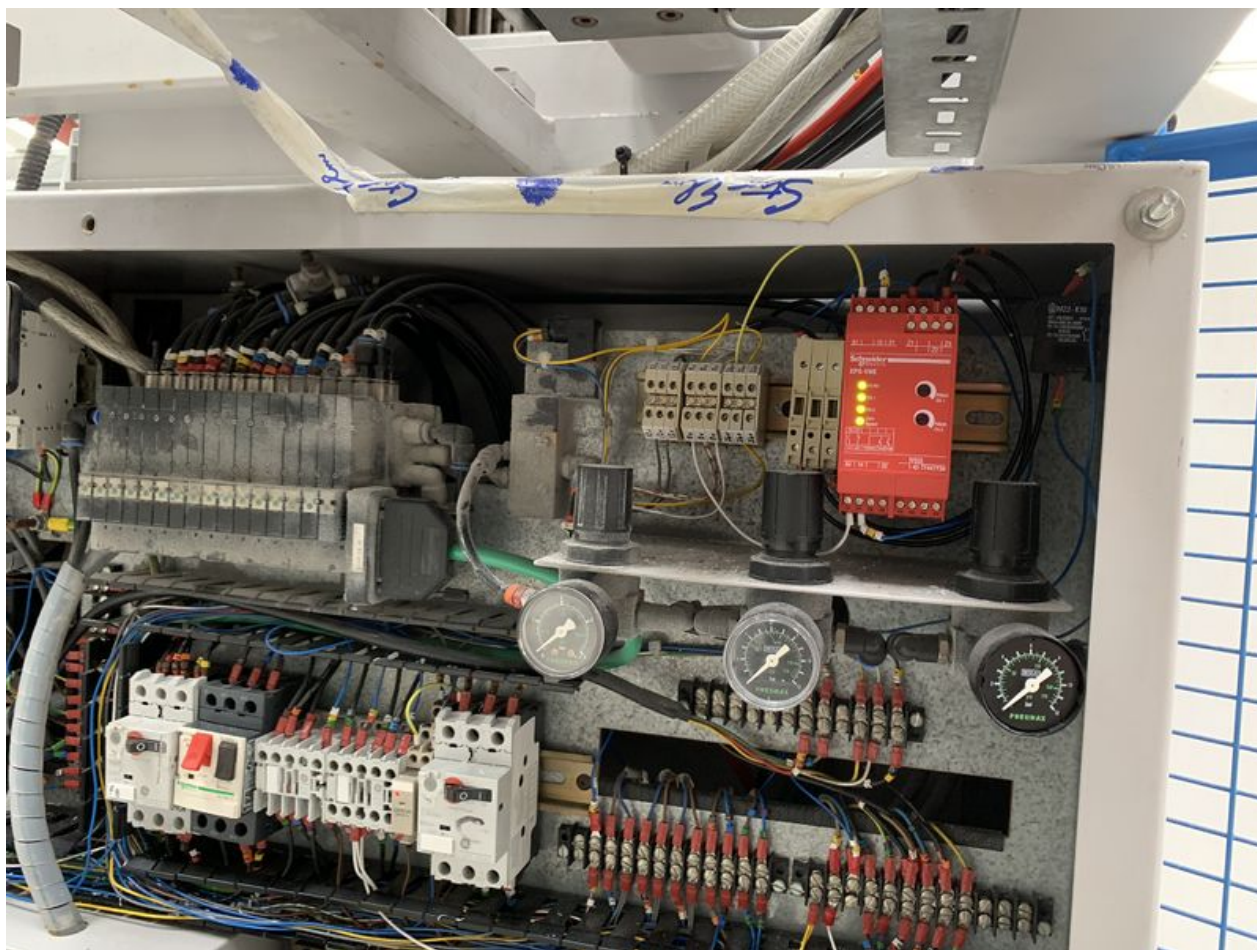


Fichier:Beckhoff AX8000 Flowline Upgrade Saw Power Panel.JPG



Size of this preview:800 × 600 pixels.

Original file (2,048 × 1,536 pixels, file size: 1.06 MB, MIME type: image/jpeg)

Beckhoff_AX8000_Flowline_Upgrade_Saw_Power_Panel

File history

Click on a date/time to view the file as it appeared at that time.

	Date/Time	Thumbnail	Dimensions	User	Comment
current	12:30, 26 March 2020		2,048 × 1,536 (1.06 MB)	Anonymous (talk)	Beckhoff_AX8000_Flowline_Upgrade_Saw_Power_Panel

You cannot overwrite this file.

File usage

The following page links to this file:

Beckhoff AX8000 Flowline Upgrade

Metadata

This file contains additional information, probably added from the digital camera or scanner used to create or digitize it. If the file has been modified from its original state, some details may not fully reflect the modified file.

Camera manufacturer	Apple
Camera model	iPhone XS
Exposure time	1/60 sec (0.016666666666667)

F Number	f/1.8
ISO speed rating	320
Date and time of data generation	11:16, 13 September 2019
Lens focal length	4.25 mm
Latitude	54° 36' 1.75" N
Longitude	5° 40' 43.42" W
Altitude	53.694 meters above sea level
Horizontal resolution	72 dpi
Vertical resolution	72 dpi
Software used	12.4
File change date and time	11:16, 13 September 2019
Y and C positioning	Centered
Exposure Program	Normal program
Exif version	2.21
Date and time of digitizing	11:16, 13 September 2019
Meaning of each component	<ol style="list-style-type: none"> 1. Y 2. Cb 3. Cr 4. does not exist
APEX shutter speed	5.9154567327636
APEX aperture	1.6959938128384
APEX brightness	1.5937174519852
APEX exposure bias	0
Metering mode	Pattern
Flash	Flash did not fire, auto mode
DateTimeOriginal subseconds	798
DateTimeDigitized subseconds	798
Supported Flashpix version	0,100
Color space	Uncalibrated
Sensing method	One-chip color area sensor
Scene type	A directly photographed image
Exposure mode	Auto exposure
White balance	Auto white balance
Focal length in 35 mm film	26 mm
Scene capture type	Standard
GPS time (atomic clock)	10:16
Speed unit	Kilometers per hour
Speed of GPS receiver	0.24794487650786
Reference for direction of image	True direction
Direction of image	135.26298909557
Reference for bearing of destination	True direction
Bearing of destination	135.26298909557
GPS date	13 September 2019