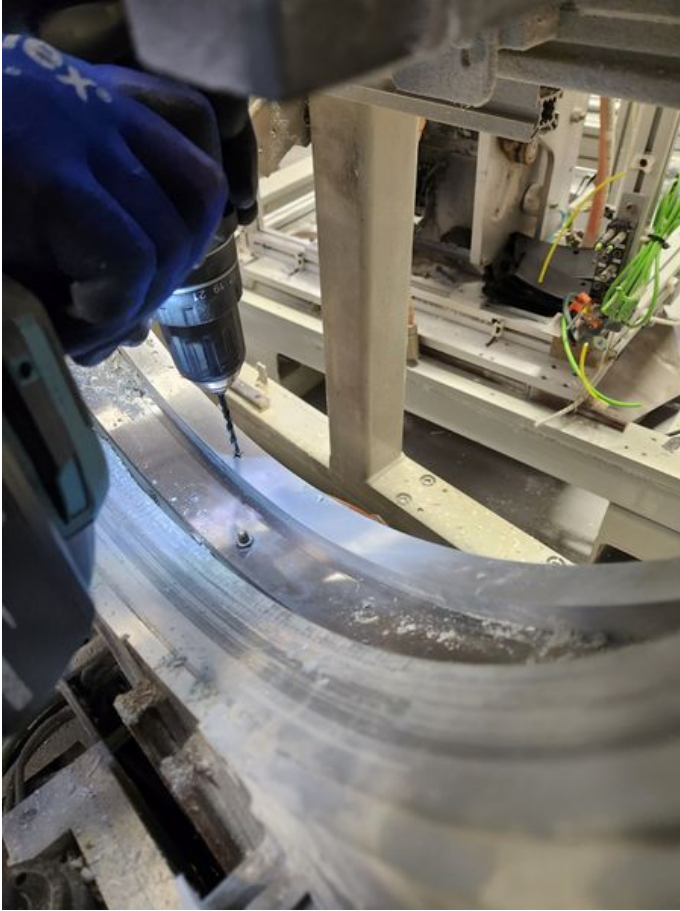


# Fichier:Autoflow R Axis Ring Seal Protection 20240209 091407.jpg




Size of this preview: 450 × 600 pixels.

Original file (3,000 × 4,000 pixels, file size: 2.65 MB, MIME type: image/jpeg)

Autoflow\_R\_Axis\_Ring\_Seal\_Protection\_20240209\_091407

## File history

Click on a date/time to view the file as it appeared at that time.

	Date/Time	Thumbnail	Dimensions	User	Comment
current	16:49, 9 February 2024		3,000 × 4,000 (2.65 MB)	Gareth Green (talk   contribs)	Autoflow_R_Axis_Ring_Seal_Protection_20240209_091407

You cannot overwrite this file.

## File usage

There are no pages that link to this file.

## Metadata

This file contains additional information, probably added from the digital camera or scanner used to create or digitize it. If the file has been modified from its original state, some details may not fully reflect the modified file.

Camera manufacturer	samsung
Camera model	SM-F936B
Exposure time	1/100 sec (0.01)
F Number	f/1.8
ISO speed rating	500

Date and time of data generation	09:14, 9 February 2024
Lens focal length	5.4 mm
Latitude	52° 35' 24.52" N
Longitude	1° 42' 33.19" E
Altitude	49 meters above sea level
Width	4,000 px
Height	3,000 px
Orientation	Rotated 90° CCW
Horizontal resolution	72 dpi
Vertical resolution	72 dpi
Software used	F936BXXS4DWJ2
File change date and time	09:14, 9 February 2024
Y and C positioning	Centered
Exposure Program	Normal program
Exif version	2.2
Date and time of digitizing	09:14, 9 February 2024
APEX shutter speed	0.01
APEX aperture	1.69
APEX brightness	1.14
APEX exposure bias	0
Maximum land aperture	1.69 APEX (f/1.8)
Metering mode	Center weighted average
Flash	Flash did not fire
DateTime subseconds	852
DateTimeOriginal subseconds	852
DateTimeDigitized subseconds	852
Color space	sRGB
Exposure mode	Auto exposure
White balance	Auto white balance
Digital zoom ratio	1
Focal length in 35 mm film	23 mm
Scene capture type	Standard
Unique image ID	K16QSNJ01PM