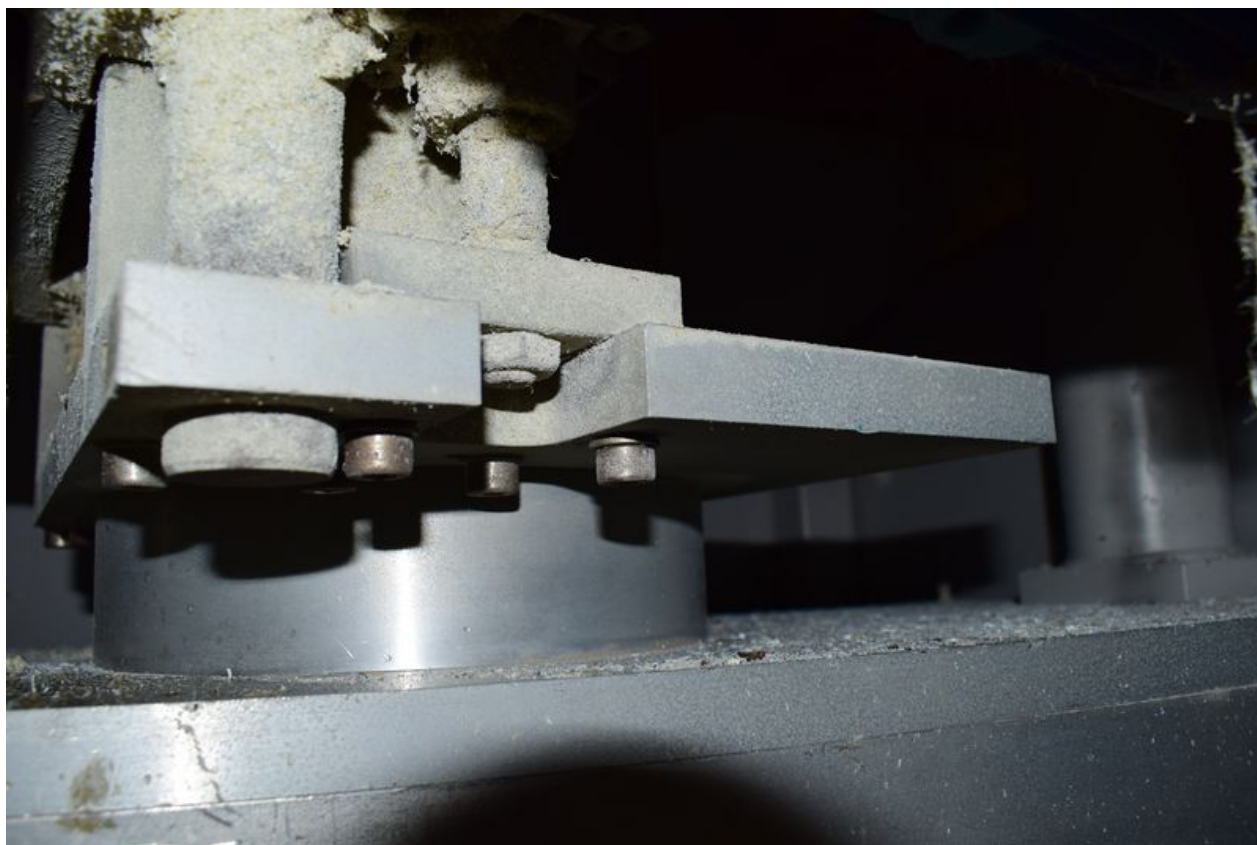


Fichier:500mm Saw Blade Upgrade DSC 0013.JPG




Size of this preview:800 × 533 pixels.

Original file (6,000 × 4,000 pixels, file size: 10.01 MB, MIME type: image/jpeg)

500mm_Saw_Blade_Upgrade_DSC_0013

File history

Click on a date/time to view the file as it appeared at that time.

	Date/Time	Thumbnail	Dimensions	User	Comment
current	19:58, 30 January 2020		6,000 × 4,000 (10.01 MB)	Stuga Engineer (talk contribs)	500mm_Saw_Blade_Upgrade_DSC_0013

You cannot overwrite this file.

File usage

The following page links to this file:

[500mm Saw Blade Upgrade](#)

Metadata

This file contains additional information, probably added from the digital camera or scanner used to create or digitize it. If the file has been modified from its original state, some details may not fully reflect the modified file.

Camera manufacturer	NIKON CORPORATION
Camera model	NIKON D5300
Exposure time	1/60 sec (0.016666666666667)
F Number	f/8
ISO speed rating	400
Date and time of data generation	13:55, 28 January 2020
Lens focal length	20 mm

Orientation	Normal
Horizontal resolution	300 dpi
Vertical resolution	300 dpi
Software used	Ver.1.03
File change date and time	13:55, 28 January 2020
Y and C positioning	Centered
Exposure Program	Aperture priority
Exif version	2.3
Date and time of digitizing	13:55, 28 January 2020
Meaning of each component	1. Y 2. Cb 3. Cr 4. does not exist
Image compression mode	4
APEX exposure bias	-0.333333333333333
Maximum land aperture	3.7 APEX (f/3.61)
Metering mode	Pattern
Light source	Unknown
Flash	Flash fired, strobe return light detected, compulsory flash firing
User comments	(c)Darren Clark
DateTime subseconds	90
DateTimeOriginal subseconds	90
DateTimeDigitized subseconds	90
Supported Flashpix version	0,100
Color space	sRGB
Sensing method	One-chip color area sensor
File source	Digital still camera
Scene type	A directly photographed image
Custom image processing	Normal process
Exposure mode	Auto exposure
White balance	Auto white balance
Digital zoom ratio	1
Focal length in 35 mm film	30 mm
Scene capture type	Standard
Scene control	Low gain up
Contrast	Normal
Saturation	High saturation
Sharpness	Normal
Subject distance range	Unknown
GPS tag version	0.0.3.2
Rating (out of 5)	0