

Ensuring Mapped Drives Connect Every Time on Startup

Once a drive is mapped manually the first Time, it appears to me on all Saws that the Saw PC will never reconnect automatically without having to double click the Drive first. Also happens on Batch Folders.

 Difficulty **Medium**

 Duration **5 minute(s)**

Contents

Introduction

Step 1 - Navigate to Start up folder

Step 2 - Make a connect.bat file in startup

Step 3 - Test

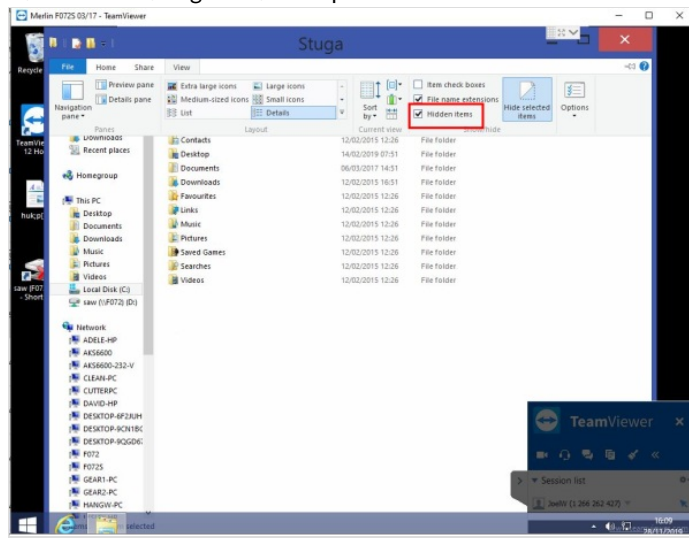
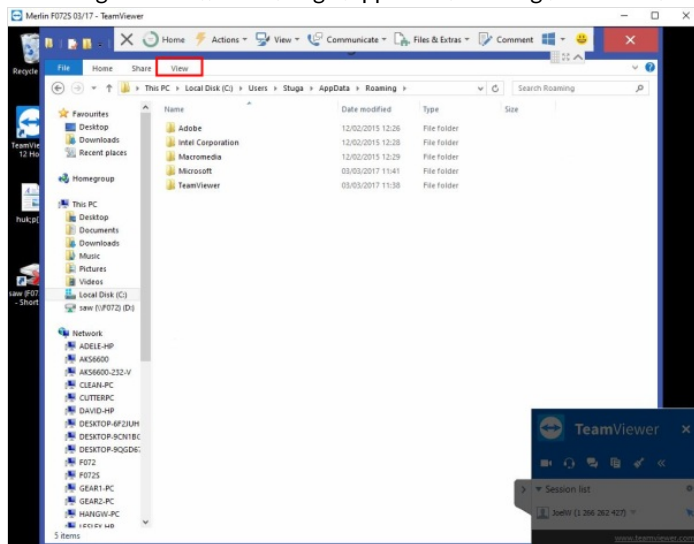
Comments

Introduction

Never found out why but seems Windows tries to manage the Mapped Drives before The Network Service is up and running

Step 1 - Navigate to Start up folder

1. Go to C:\\Users\\Stuga - From here we need to go to 'View' and tick 'hidden items' to show folder 'App Data'
2. Navigate to C:\\Users\\Stuga\\App Data\\Roaming\\Microsoft\\Windows\\Start Menu\\Programs\\Start up



Step 2 - Make a connect.bat file in startup

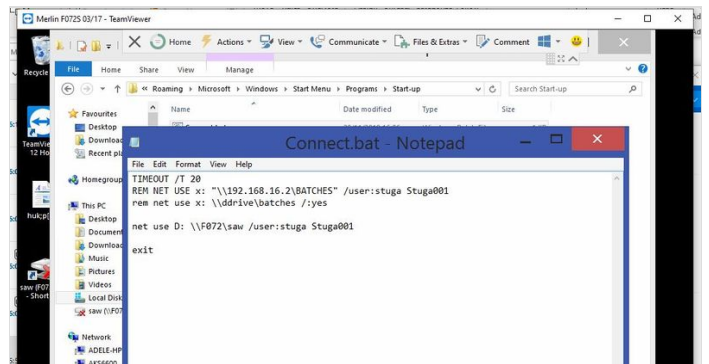
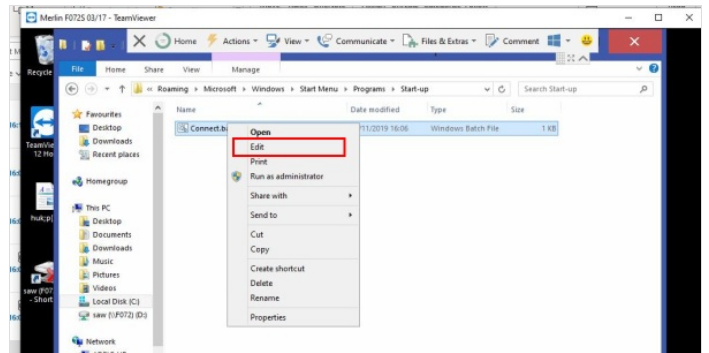
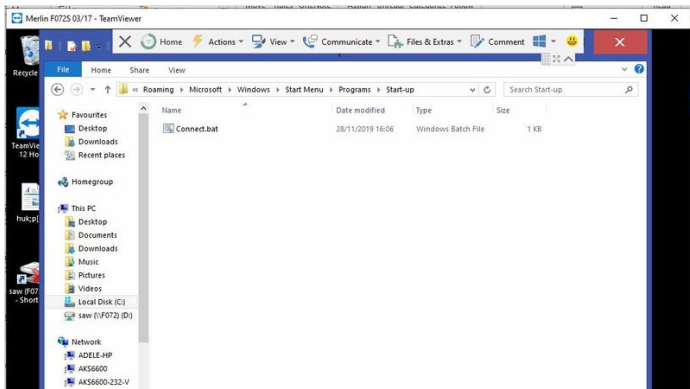
Make a "connect.bat" text file and give it a 20 second delay before trying to map the drive again.

Right Click on the file then choose 'Edit'

```
TIMEOUT /T 20
REM NET USE x: "\\192.168.16.2\BATCHES" /user:stuga Stuga001
rem net use x: \\ddrive\batches /:yes
exit
```

I have shown 2 example lines , one using IP address and the other PC name.

...Remove the "REM" command at the beginning for the line that you want to use



Step 3 - Test

Test by restarting the machine, wait for the screen shown in the images to appear.

Once the countdown expires the mapped drive should be connected.

