


Ecoline Site Installation Guide

How to install a Stuga Ecoline

 Difficulty **Medium**

 Duration **4 hour(s)**

Contents

Introduction

Video overview

Step 1 - Forklift machine

Step 2 - Ensure services are in place

Step 3 - Floor area

Step 4 - Health and Safety Checklist

Step 5 - Machine Placing

Step 6 - Plastic Feet

Step 7 - Level Main Frame

Step 8 - Pull infeed into place

Step 9 - Level Infeed

Step 10 - Ensure Roller Height clears Plastic

Step 11 - Connect the infeed connections

Step 12 - Ensure the top guard clears the infeed pull / grip assembly

Comments

Introduction

Installation of an Ecoline is quite straight-forward as all of the main levelling and alignment is taken care of inside the main module housing.

Installation involves 3 steps

1. Levelling main module
2. Attaching and Levelling Infeed Frame
3. Refitting Infeed cover

Step 1 - Forklift machine



...The lifting balance point is not the centre of the machine - the centre of gravity is towards the maching head end



...The machine weight is 2t, so an appropriate forklift is necessary

Step 2 - Ensure services are in place

Services Required

- **Electrical** - 16A 3ph + Neutral. The machine is supplied with a 32A Quick-Connect Socket
- **Pneumatic** - 10cfm 6 bar
- **Network** - Cat5e with internet access



...These services are vital for installation

Step 3 - Floor area



...Ensure the floor area is level and clean of dirt and debris

Step 4 - Health and Safety Checklist

- Inform all personell in area that an installation is going on
- Lift and move the machine with 2 pallet trucks, rated capacity 2t
- 2 man lift is required to fit the infeed guard

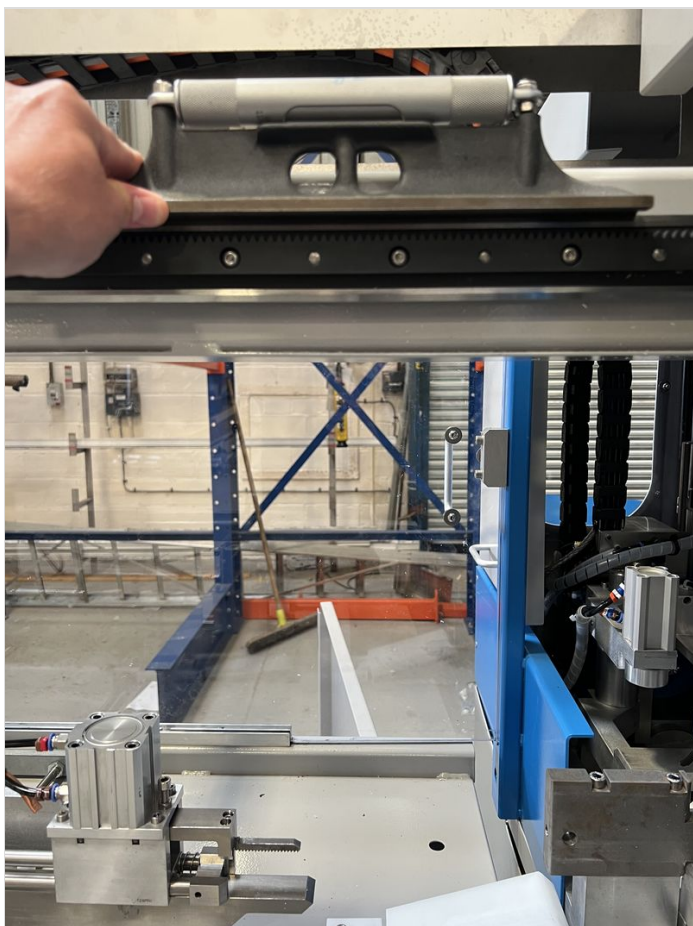
Step 5 - Machine Placing

Allow adequate room around the machine for electrical door access

Step 6 - Plastic Feet

The machine is supplied with plastic feet for the machine levelling bolts to sit on

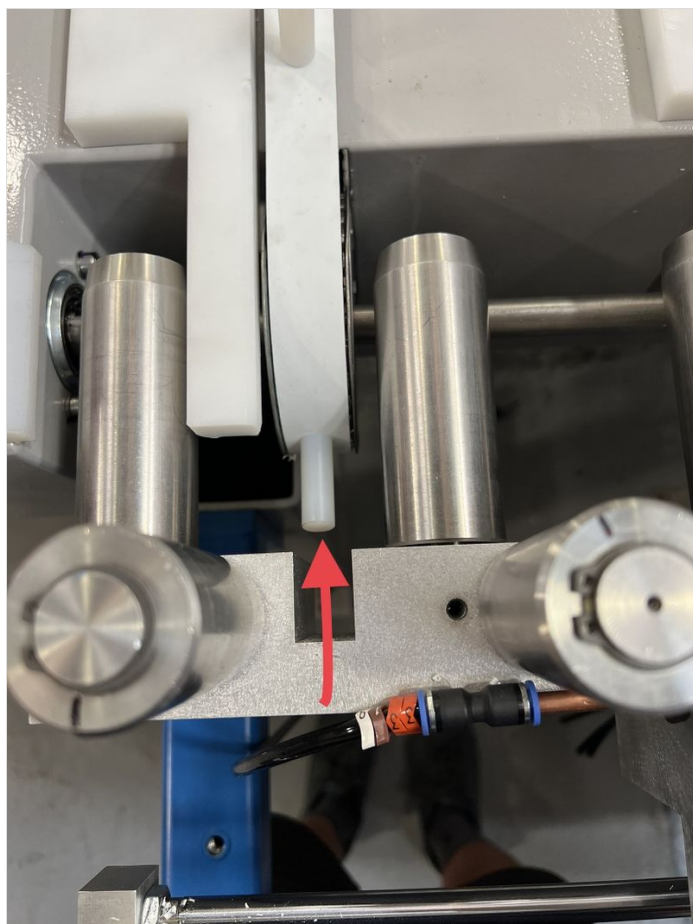
Step 7 - Level Main Frame



Step 8 - Pull infeed into place

Ensure the pegs do not interfere with slots when they are at their 90 degree position, and that the table is not inserted "too deep" so the pegs bottom out

i ...The photo here shows the infeed table position before it is pushed back to its correct position



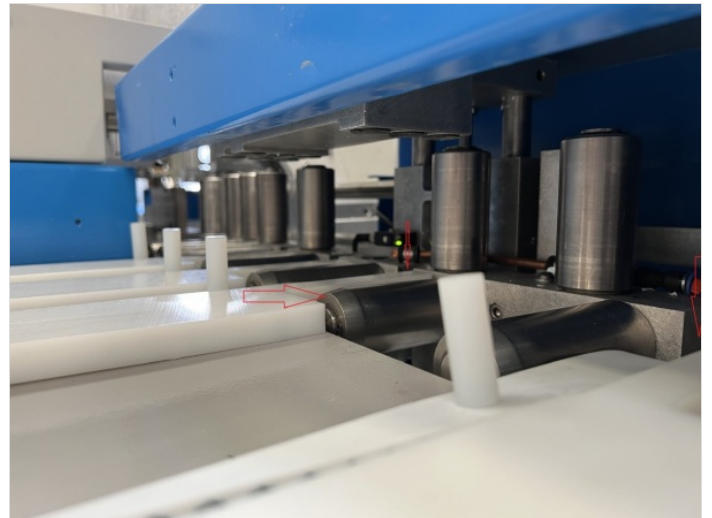
Step 9 - Level Infeed

Machine should be levelled to within 1mm in 1000mm



Step 10 - Ensure Roller Height clears Plastic

This is what the taper on the roller approach is for - to raise the profile onto the rollers



Step 11 - Connect the infeed connections

- Air Pipes
- Material Load Sensor
- Barcode Reader

Step 12 - Ensure the top guard clears the infeed pull / grip assembly

