

# Dismantle Autoflow Mk4

How to safely dismantle an Autoflow Mk4 for transport

 Difficulty **Medium**

 Duration **4 hour(s)**

## Contents

- Step 1 - Package Printer in original box
- Step 2 - Thoroughly clean the machine of swarf and material
- Step 3 - Prepare the infeed for transport
- Step 4 - Prepare the tooling heads for transport
- Step 5 - R Axis
- Step 6 - Y Axis
- Step 7 - Z axis
- Step 8 - Check and Pack guarding
- Step 9 - Tie All Clamps Safely
- Step 10 - JX Ejector Axis
- Step 11 - Lower Eject Assembly
- Step 12 - Air gun stowage
- Step 13 - Conveyor
- Step 14 - Extractor
- Step 15 - Tie doors shut
- Comments

## Step 1 - Package Printer in original box



---

## Step 2 - Thoroughly clean the machine of swarf and material

---

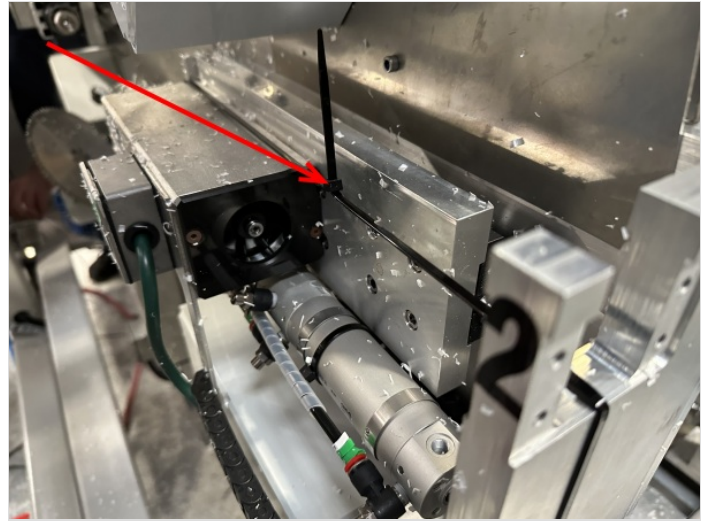
## Step 3 - Prepare the infeed for transport

Stowing Stuertz Infeed Table



## Step 4 - Prepare the tooling heads for transport

6 off spindles



## Step 5 - R Axis

Tie the R axis at the datum assembly point



## Step 6 - Y Axis

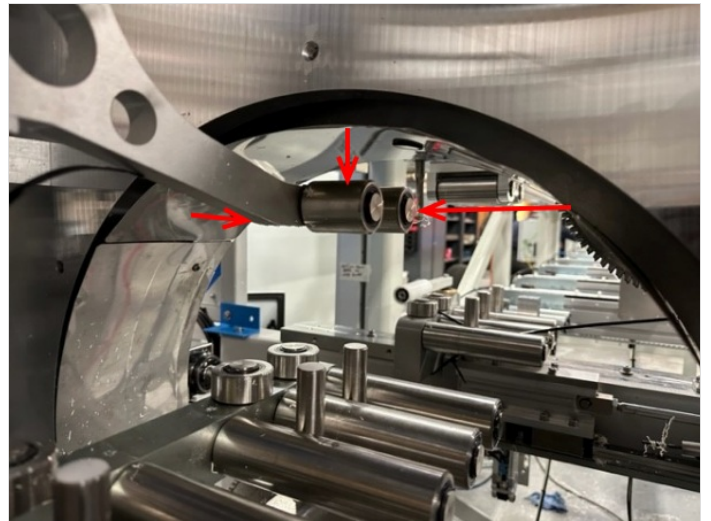
Y axis roughly to middle  
Cut profile blocks and tie in to prevent movement



---

## Step 7 - Z axis

Wind Z axis to bottom of travel  
Take care to ensure MH outfeed top clamp is not compromised



---

## Step 8 - Check and Pack guarding

- Ensure the correct number of fittings sent
-



## Step 9 - Tie All Clamps Safely

1. MH Infeed Top
2. MH Infeed Side
3. MH Outfeed Top
4. MH Outfeed Side
5. Saw Infeed Side
6. Saw Outfeed Side
7. Ejector top
8. Saw Outfeed top
- 9.

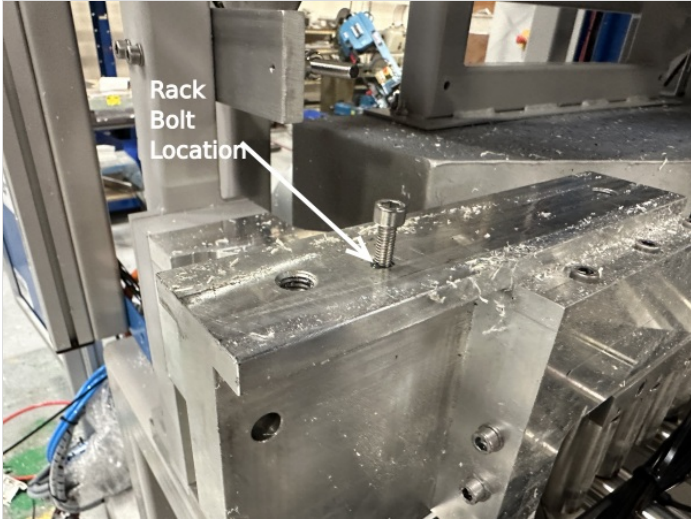


---

## Step 10 - JX Ejector Axis

1. Detach all cables and pipes at the carriage end ensuring it is clearly labelled where they re-attach
2. Remove rail mounting bolt(s) on machine side of rail
3. Remove the shoulder bolts connecting the assembly to the fram
4. Second person needed to support weight of carriage while lifting off
5. Package carefully with bolts
6. Tie back the ejector energy chain
- 7.





## Step 11 - Lower Eject Assembly

Tie back the assembly



---

Step 12 - Air gun stowage

---

Step 13 - Conveyor

---

Step 14 - Extractor

---

Step 15 - Tie doors shut

---