

D0007544 Zip Gate Opener Fitting

How to fit the zip gate opener to prevent damage to the zip gates

Contents

Problem

Solution

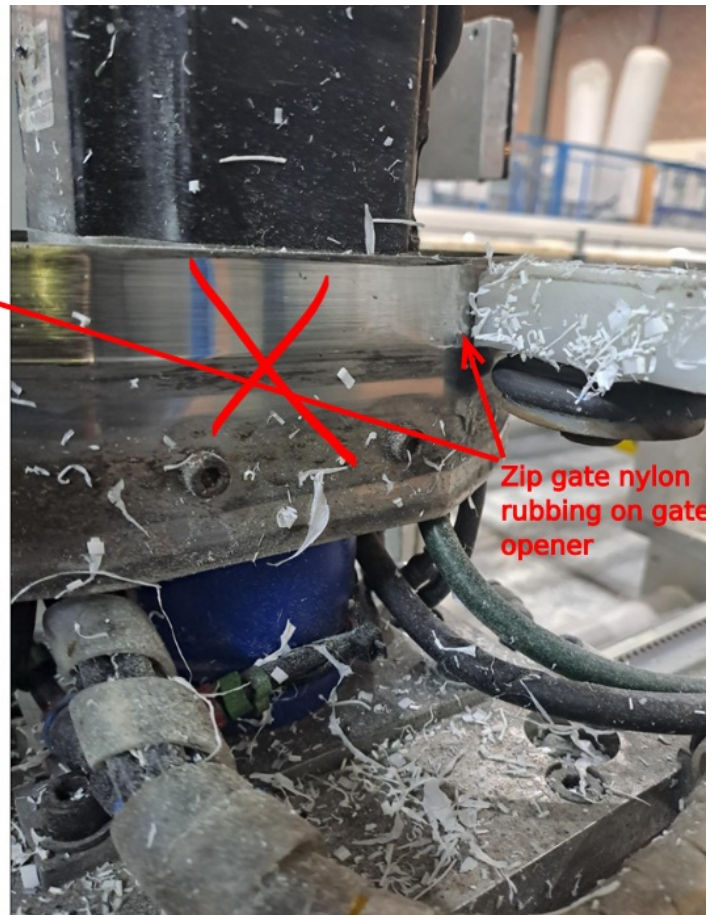
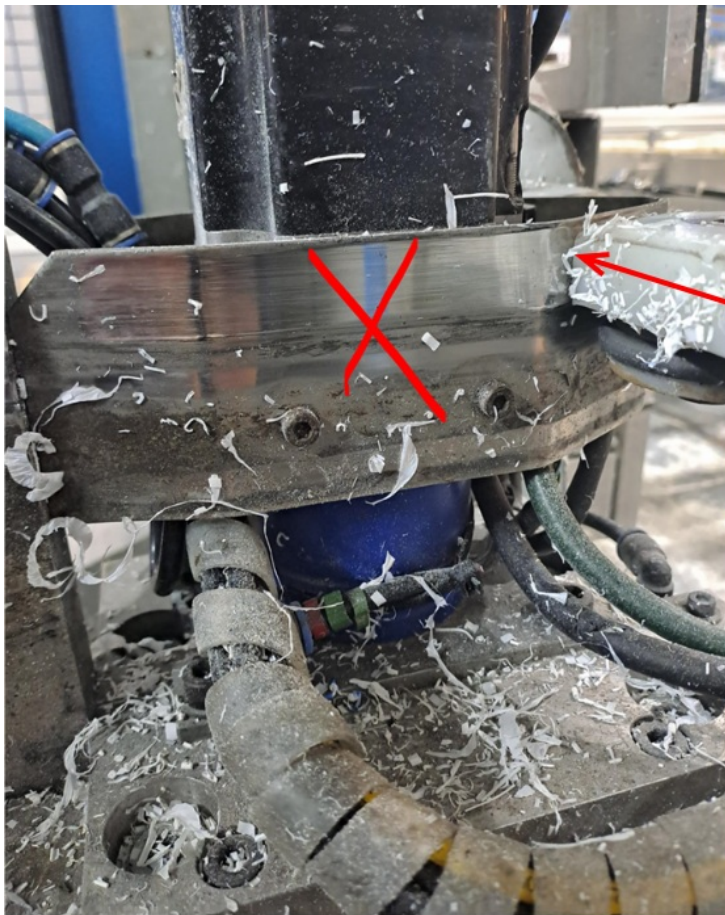
D0007544E Redesign

Comments

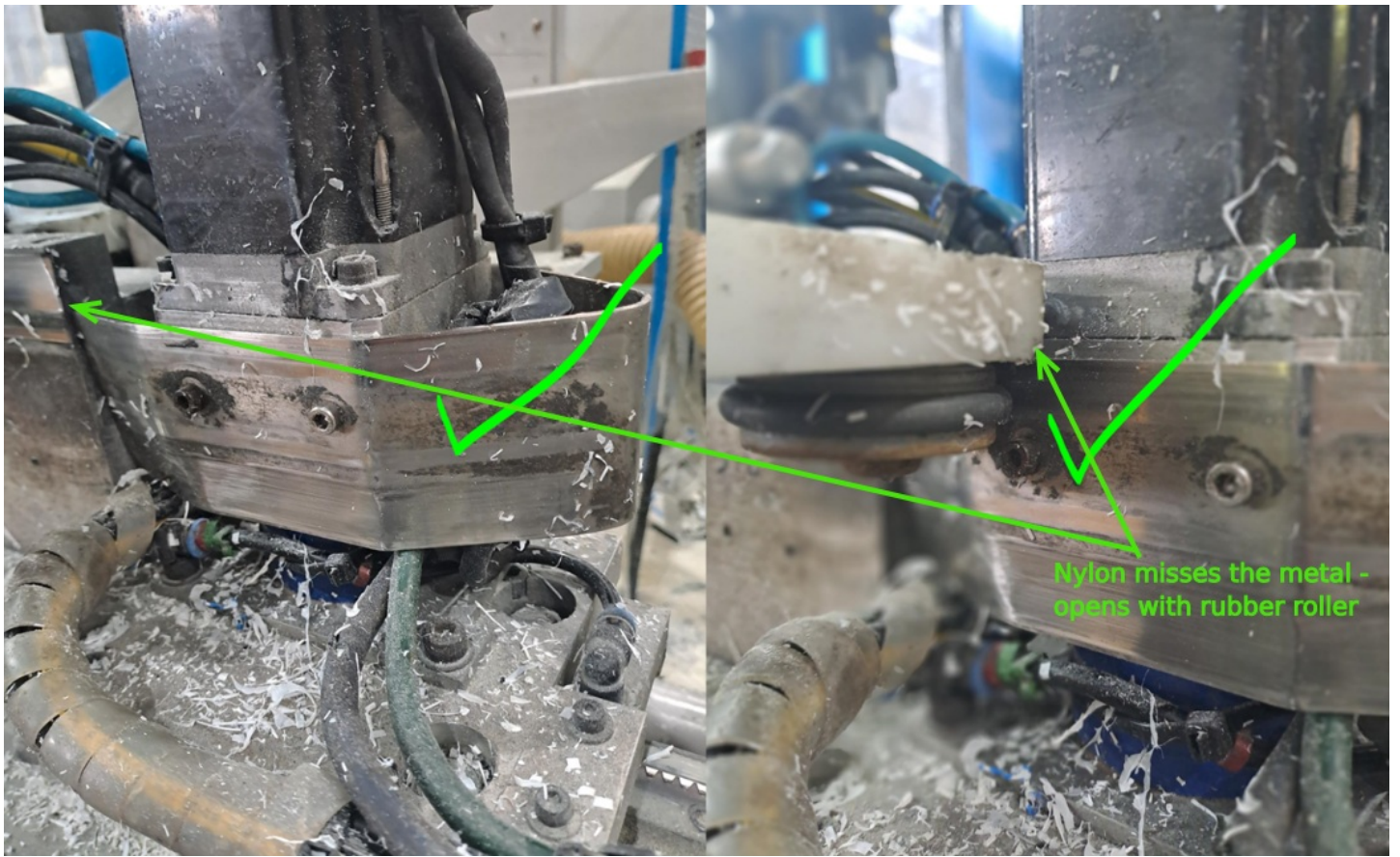
Problem

Fitting the Zip gate opener D0007544 upside down will force the plastic to rub on the opener, rather than the rubber roller.

⚠ ...This Part is handed. D0008749 should be fitted for left to right feed machines, or use the latest version D0007544E (unhanded)

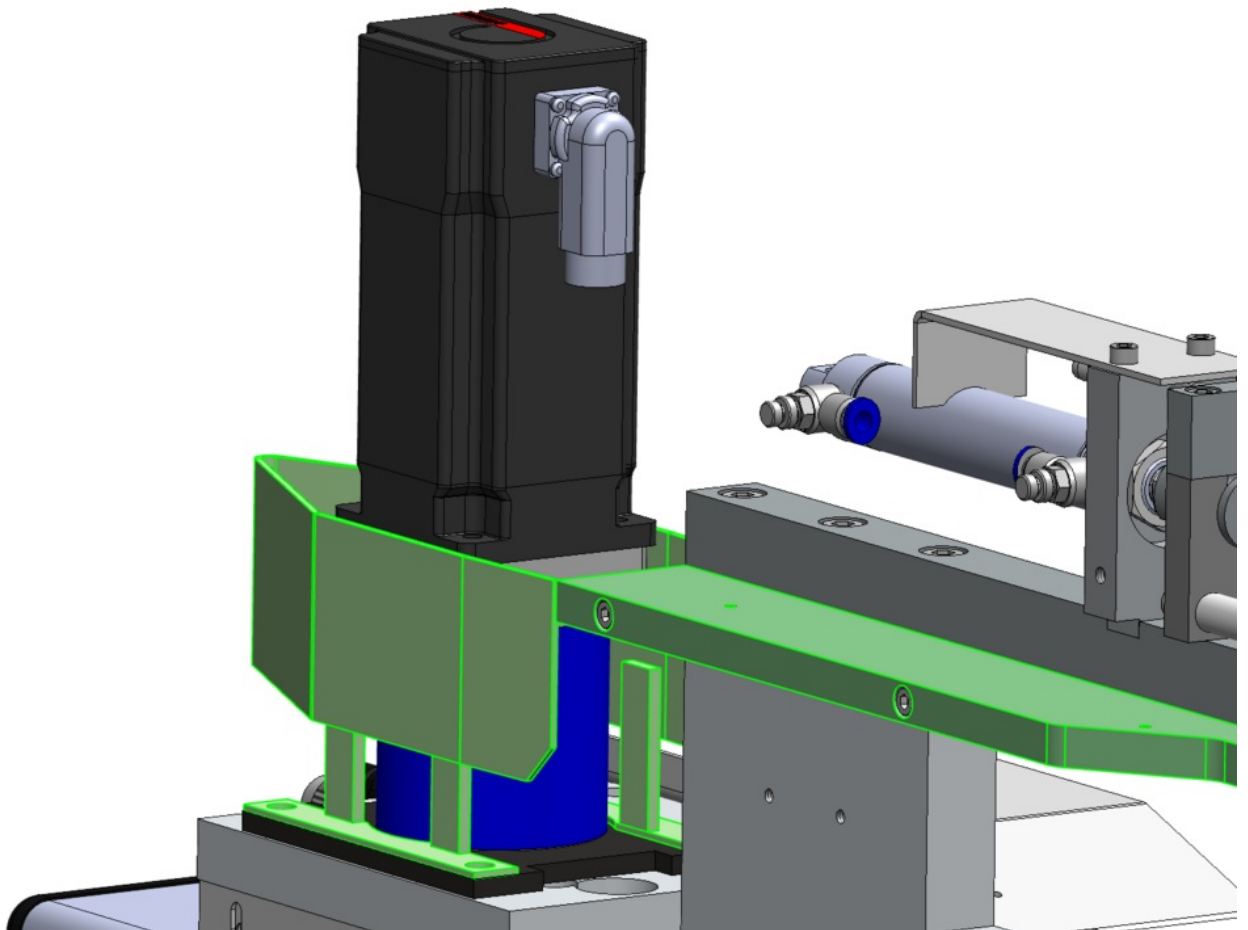


Solution



D0007544E Redesign

The opener has been redesigned with legs so that the gearbox does not have to be used as a fixing method
This part is **unhanded**



See also R0019108 Zip Gate Opener for RS Automation Gearbox for details of the gearbox modification used when an RS Automation Motor has to be used. This motor / gearbox combination uses a wider motor and gearbox frame size which needs a full mod to the gearbox to incorporate the gate opener