

B0000370 Slideway Bearing Compatibility

Replacement of B0000370 bearings

Contents

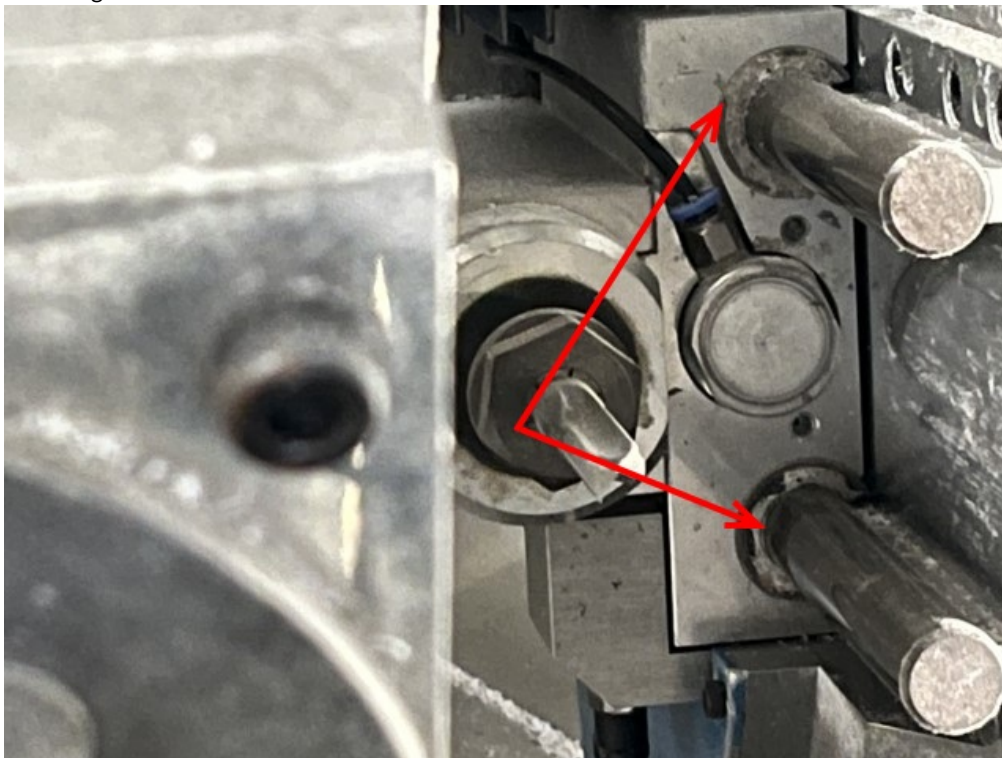
Problem

Solution

Comments

Problem

The replacement of the B0000370 bearing in the flowline Mk3 spindle head has been difficult in recent years because a dimensionally equivalent part has been impossible to source. The issues have been surrounding the original design and its dependence on the dimensions of one particular make of bearing that is now unavailable

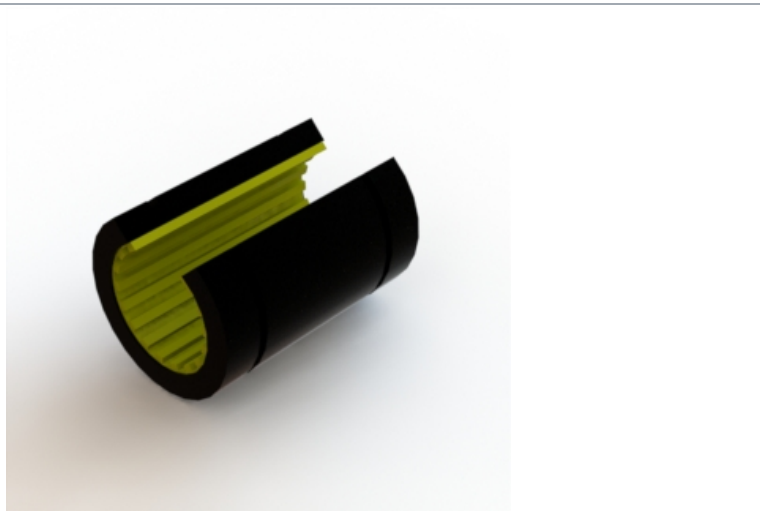


i ...The flowline slideway base was modified in the past to allow other bearing fits, but this is no help to a machine in the field where a replacement is necessary to an original base

Solution

The B0000082 Igus Igladur bearing (used on standalone saw infeed pusher) has been found to be a perfect fit. This has been trialled on a recent rebuild (FO14) which is fitted with the original unmodified slide bases. The solid slide nature of these bearings makes them more suited to a high swarf environment

B0000098 Bearing



B0000098 Bearings fitted



Showing fitting to unmodified slide base

