

# B0000082b Motor replacement For Obsolete part B0000082

Upgrade parts and procedure to replace obsolete load roller motor B0000082

 Difficulty **Medium**

 Duration **2 hour(s)**

## Contents

Introduction

Step 1 - Motor drive key Modification

Step 2 - Fit D0008225b adapter plate

Step 3 - Mount clutch plate

Step 4 - Fit assembly to load rollers

Step 5 - Set clutch gap

Step 6 - Mechanical installation complete

Comments

## Introduction

To rectify the obsolescence of B0000082 drive motor, the following replacement kit has been designed to enable continued support of older assemblies within stuga machines .

The kit consists of a new motor and appropriate gearbox, adapter plate and new fasteners . Also details are included here for a small modification to enable the upgrade to function correctly

Following parts are required for this upgrade

B0000082b load motor and gearbox 1 off

D0008225b adapter plate

F0000189 M6 x 25 set bolts 4 off

F0000058 A form washer 4 off

F0000190 M8 x 40 set bolts 2 off

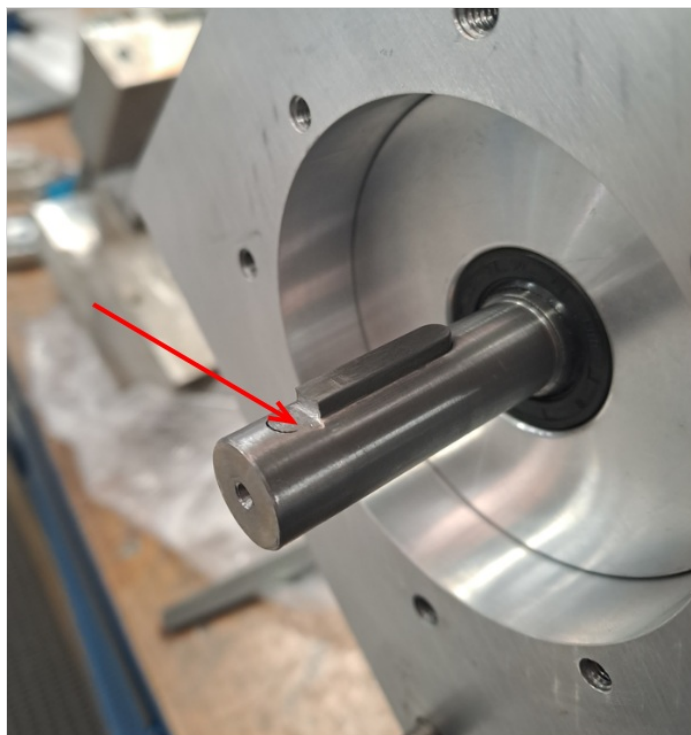
F0000007 M5 x 16 cap head bolt 4 off

## Step 1 - Motor drive key Modification

New motor B0000082b will need modification of drive key to function correctly.

5mm should be removed from key in situ as shown in photo

This will enable clutch plate to move to desired position on assembly

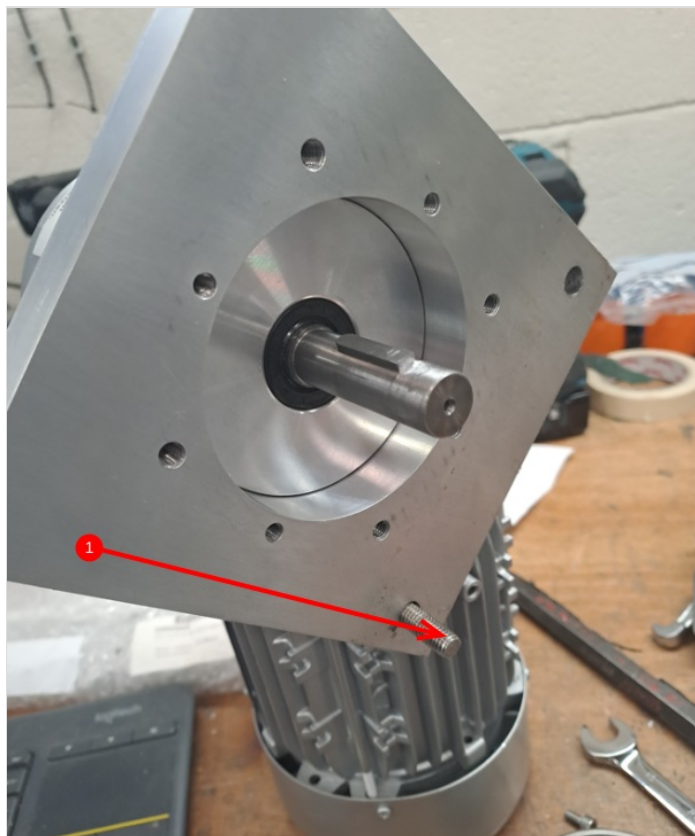


## Step 2 - Fit D0008225b adapter plate

1

**⚠** ...ensure 1 off m8 x 40 set bolt and A form washer is fitted to plate before bolting to load motor as access is restricted

2 Using 4 off m6 x 25 set bolts and A form washers , adapter plate should be mounted to B0000082b motor in configuration as shown. Loctite 243 Adhesive should be applied to fasteners

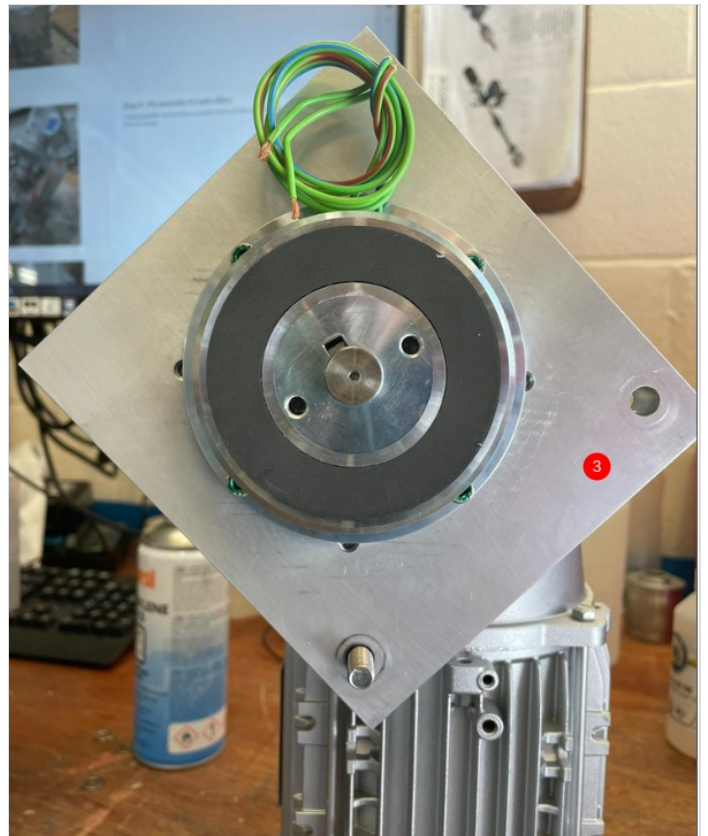
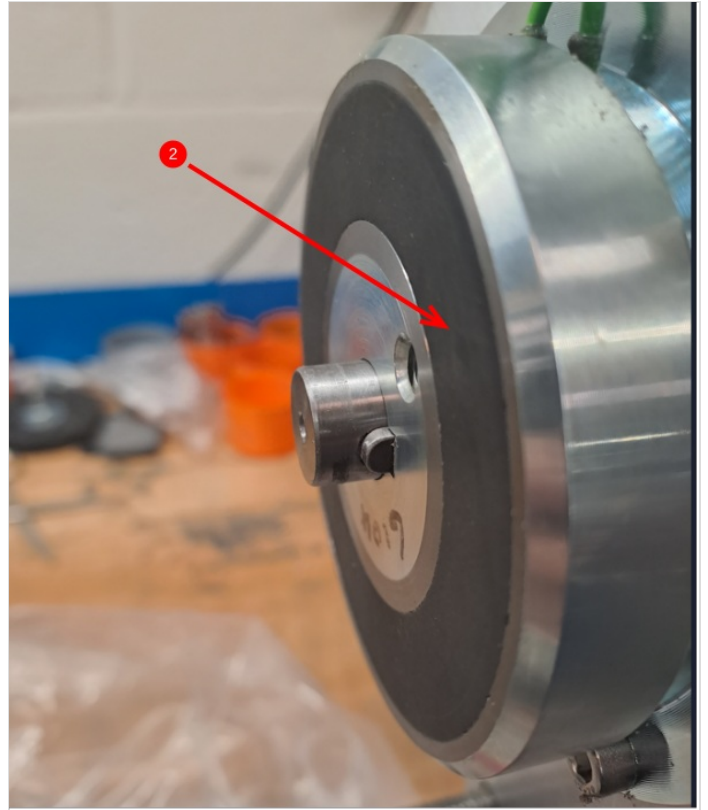
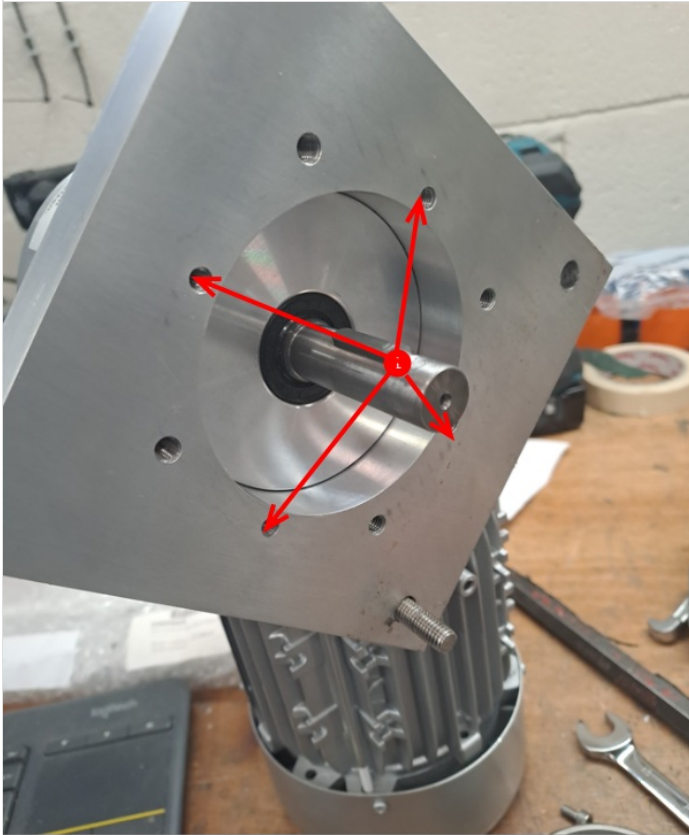


## Step 3 - Mount clutch plate

1 Mount electro clutch backplate to indicated holes using m5 x 16 socket caps 4 off with loctite adhesive 243

2 Slide on second part of clutch and use to align clutch backplate before tightening all 4 m5 bolts to secure back plate in position

3 Orientate electro clutch as shown in picture



## Step 4 - Fit assembly to load rollers

1 Add second M8 x 40 cap head and A form washer to assembly and fit assembly as shown , then secure both m8 set bolts



---

## Step 5 - Set clutch gap

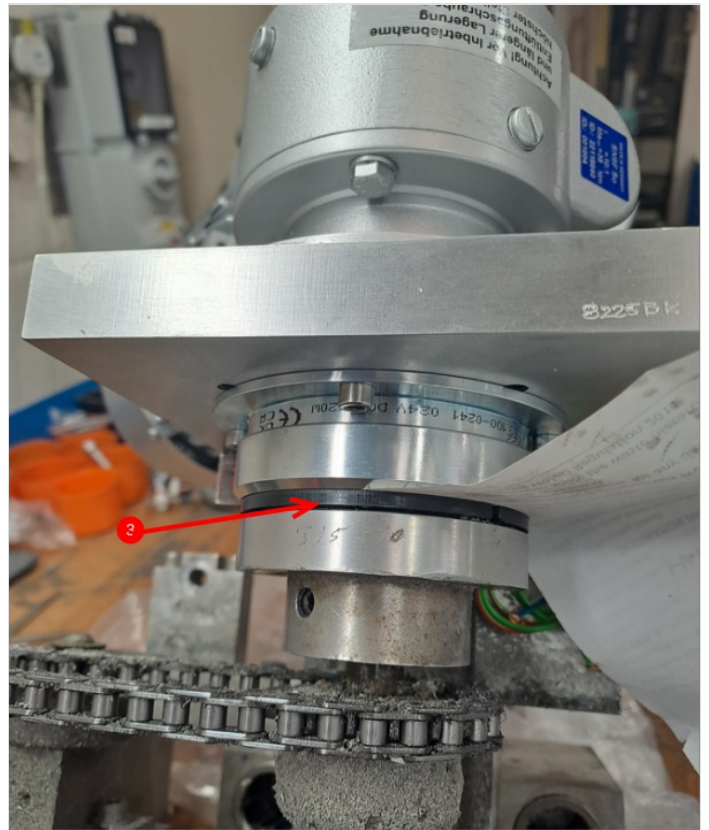
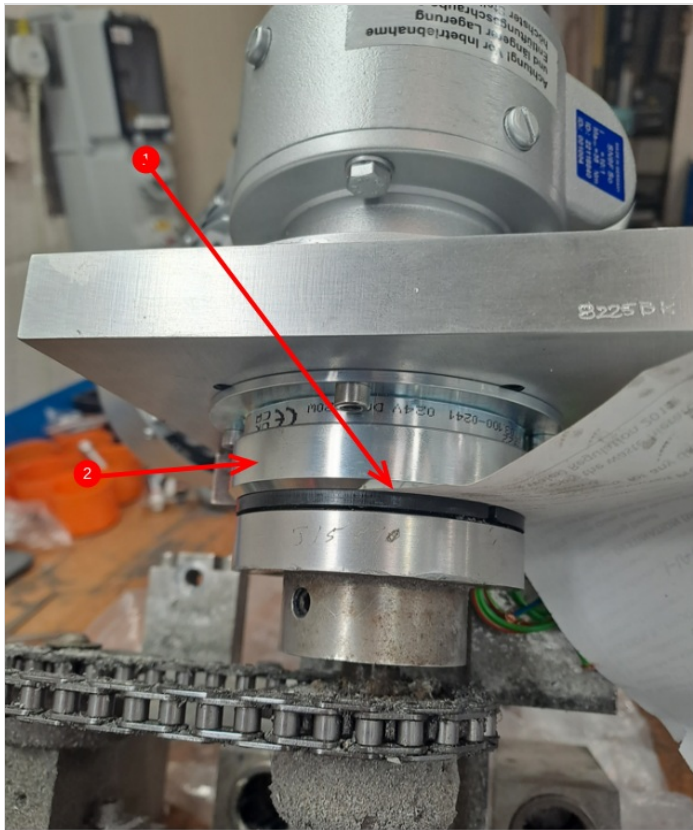
1 Clutch gap should be set to allow correct operation of clutch

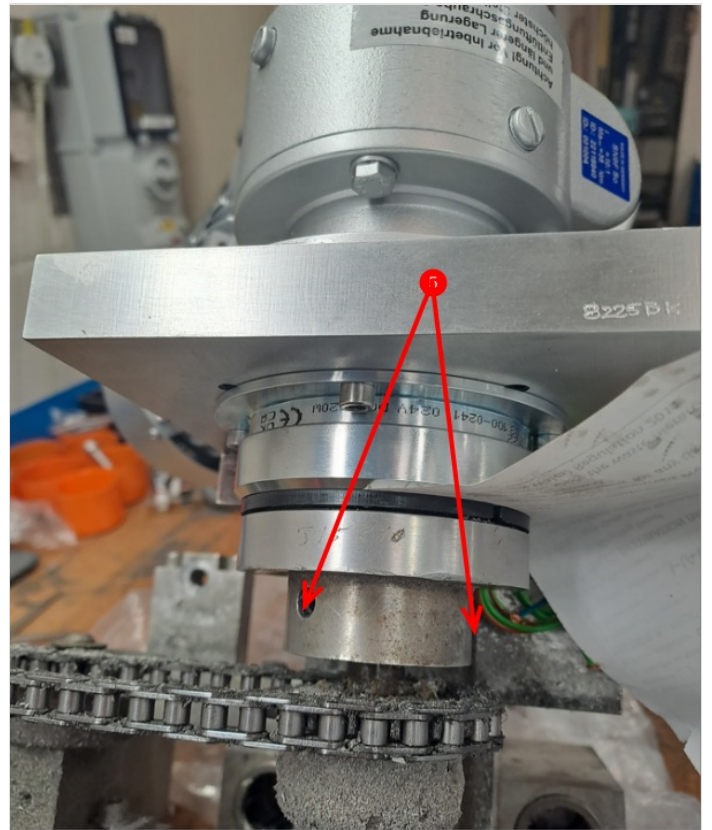
2 The part indicated (item 2) should move freely back and forwards onto the friction plate

3 Clutch friction plate (item 3) mounted to the load roller

4 Set the gap between these two parts to the thickness of a piece of paper

5 The adjustment is achieved by undoing item 5 and moving friction plate towards/away from clutch assembly





---

Step 6 - Mechanical installation complete

