



Autoflow Maintenance - Infeed

Weekly and Monthly Maintenance Procedures for Autoflow Infeed Table

 Difficulty Easy

 Duration 30 minute(s)

Contents

Introduction

Step 1 - Stainless Steel Bed

Step 2 - Main display unit (Monitor)

Step 3 - Rear Backfence Rollers

Step 4 - Drive shafts

Step 5 - Pop-Up function

Step 6 - Flapper Paddles

Step 7 - End Stop

Comments

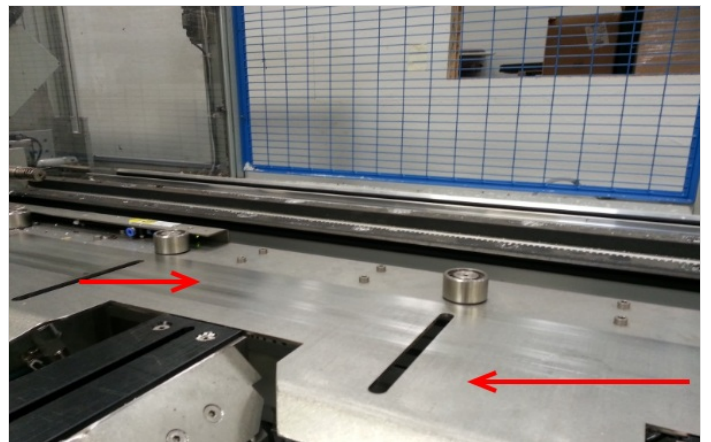
Introduction

The following preventative maintenance tasks should be carried out regularly on the machine. The frequency depends on the machine use, but as a guide:

2-3 Shifts	Weekly
40 Hrs/Week	Bi-Weekly
20 Hrs/Week	Monthly

Step 1 - Stainless Steel Bed

Use a suitable foam cleaner for cleaning off the glue and tape residue left by the profile rolling along the beds



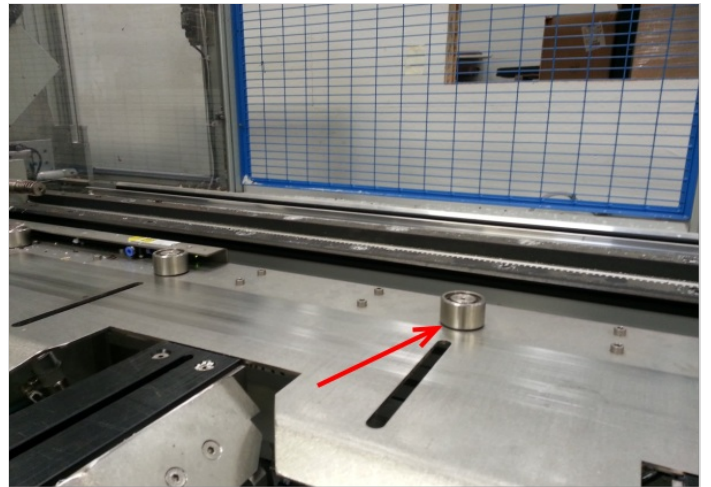
Step 2 - Main display unit (Monitor)

Clean display with soft cloth to avoid dirt, etc. causing malfunction of the touch screen



Step 3 - Rear Backfence Rollers

Apply oil to top and side of roller units and then slowly spin them for a few revolutions to allow the oil to penetrate the bearings



Step 4 - Drive shafts

1 pumps of grease via grease nipple, check for any signs of damage or wear



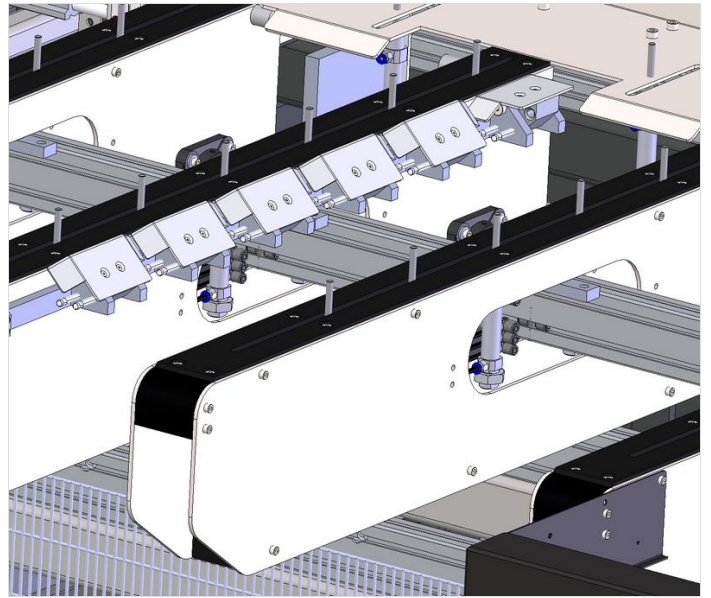
Step 5 - Pop-Up function

Using the Service screen, check the pop up rows rise and sink in unison



Step 6 - Flapper Paddles

Check function and operation of each paddle - ensure it does not stick in up or down position



Step 7 - End Stop

Ensure the end stop slides on the linear cylinder. The system acts under a low constant pressure and should slide easily

