


ACEpc Changing IP address using netedit

Using the netedit program to change the IP address of an ACEpc running DOS software

 Difficulty Easy

 Duration 5 minute(s)

Contents

Introduction

Step 1 - Run NetEdit from command prompt

Step 2 - Set the saw name

Step 3 - Saw IP address

Step 4 - Multi Name

Step 5 - Multi IP

Step 6 - Set Subnet mask

Step 7 - ZLP Settings

Step 8 - Save + Exit

Step 9 - Remove Disk and reboot

Comments

Introduction

The ACEpcs use two different systems for connecting a network

1. NETBeui - this was used on earlier machines but reliability depends on the customer network setup. Reconfiguration after initial setup is difficult
2. IP addressing - A setup system was written using IP addresses to connect. This is a little harder to set up, but is easier to change later. A special program called netedit was written which updates all the correct files in the background

Step 1 - Run NetEdit from command prompt

At DOS prompt, ensure you are on drive C: by typing

```
c:
```

And press enter

type

```
netedit
```

And press enter

If the file does not exist, follow the procedure for installing the netedit software using a 'netsetgo' disk

https://stuga.dokit.app/wiki/ACEpc_Installing_netedit_with_NetSetGo_disk

Step 2 - Set the saw name

Build number must be unique. If a flowline saw put an "s" on the end.
i.e. F073S

! ...The text edit boxes are not well written and will fail if the right / left cursor keys or Del key is used. You should always overwrite the existing text with the full name or IP address



Step 3 - Saw IP address

This is supplied by customer. IT department

*If testing in house it needs to be on the 192.168.16.xxx range.
e.g 192.168.16.101*



Step 4 - Multi Name

If this is for a Flowline - Build Number of Flowline machining center
Otherwise this will be the net NETBEUI name of the pc you are connecting to.

For testing at stuga this will be NAS1



Step 5 - Multi IP

If this is for a Flowline - IP Address of Flowline machining center
Otherwise this will be the IP address of the pc you are connecting to.

For testing at stuga this will be 192.168.16.6



Step 6 - Set Subnet mask

This is the subnet mask for the customer factory

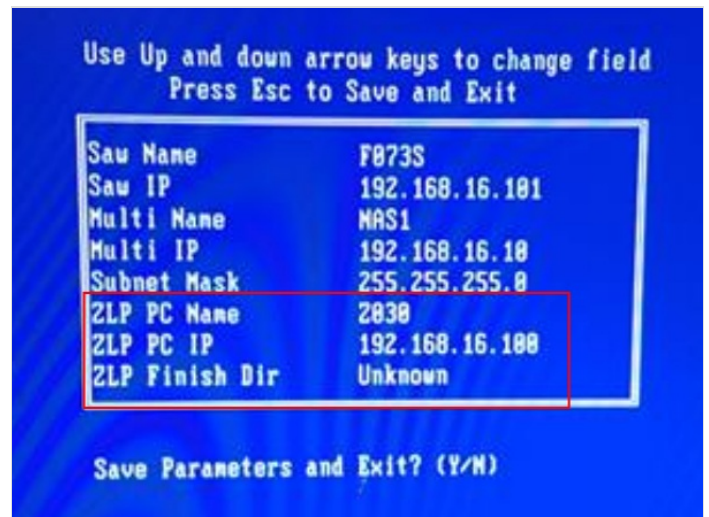
i ...For Ip addresses beginning with 192.168.. this is generally 255.255.255.0 For other ranges this can vary, so check with customer IT department



Step 7 - ZLP Settings

Leave these settings as-is

i ...These are historical settings for old machines that used a Zebra Label print Server PC. The label servicing is now done on winMulti software so a separate server is not needed



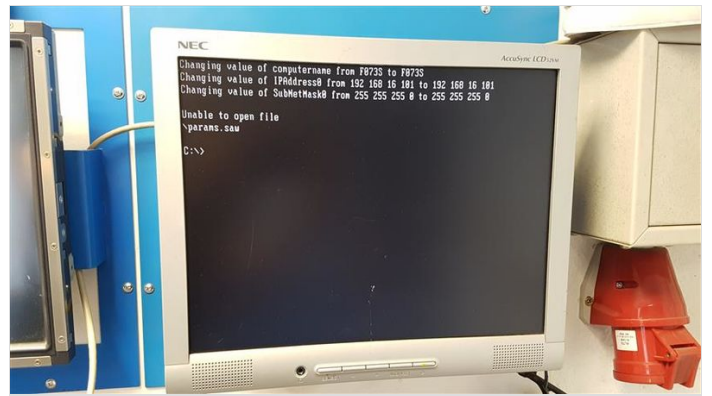
Step 8 - Save + Exit

Press escape - then Y

The message:

```
Unable to open params.saw file
```

is normal.



Step 9 - Remove Disk and reboot

Ensure the floppy disk is removed and reboot

Success will be seen if the machine boots into Drive D:

If the saw is connected to a flowline, the saw software should run automatically
